

BRENT SPENCE BRIDGE EMERGENCY REPAIR

CRASH TO COMPLETION

NOV. 11 – DEC. 22, 2020



Statewide Transportation Presentation

January 20, 2021



CRASH



CONTRACT



CONSTRUCTION



COMPLETION



NOV. 11, 2:45 A.M.

- Two commercial vehicles collided on the Northbound/Lower deck of the bridge
- Neither truck carrying hazardous material



CRASH



INSPECTION

- 20-30 inspectors from KYTC and four outside firms were on the bridge within 24 hours
- River traffic was closed temporarily as a precaution
- Inspectors determined no structural damage to critical members of the bridge – the bridge could and would be repaired



CONTRACT PROCUREMENT

- **Innovative Approach**
 - Purchasing Contract
 - Solicit Proposals
 - Prebid Meeting with contractors
 - Consolidated timeline

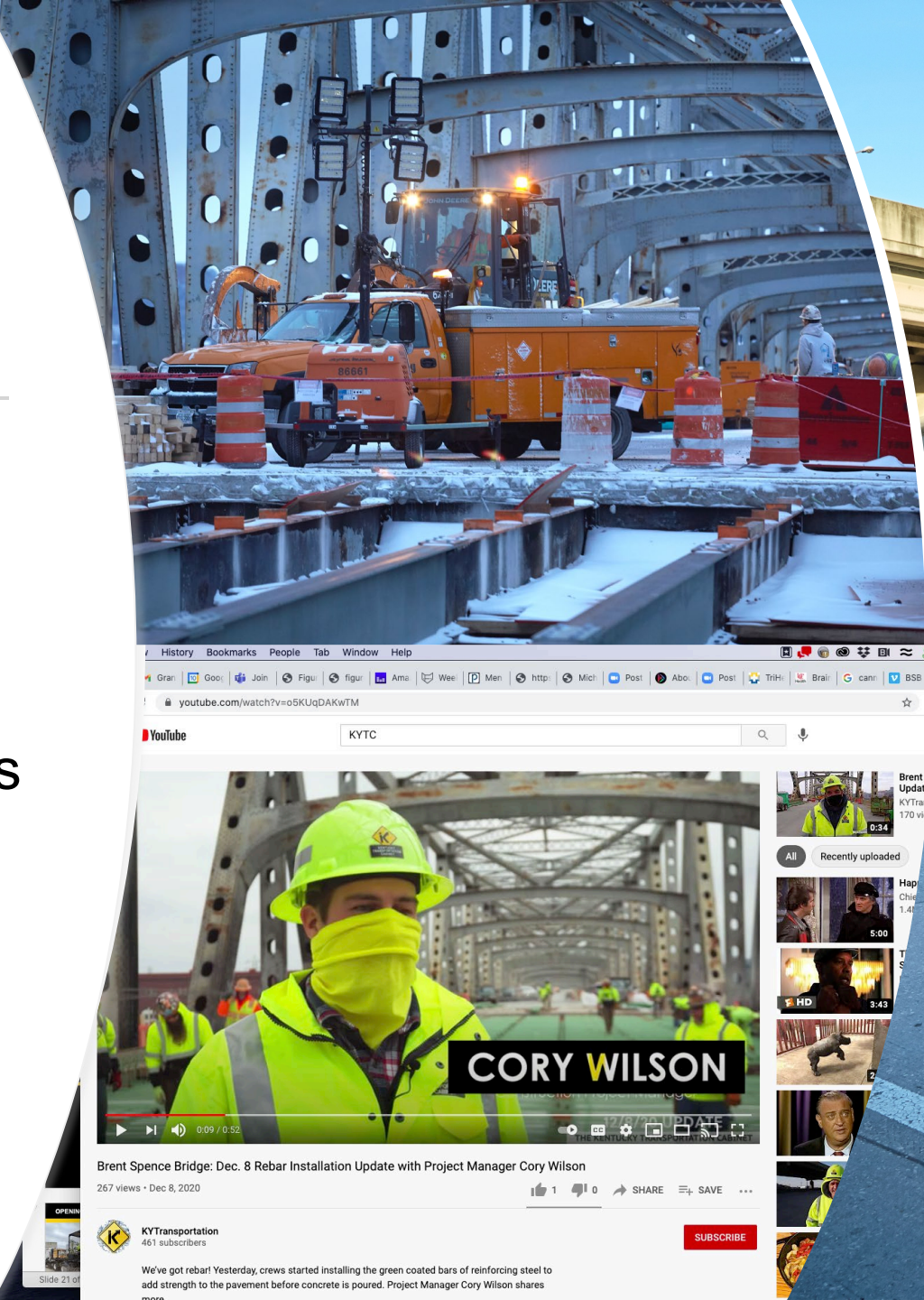


CONTRACT



PROJECT PILLARS

- Construction
- Maintenance of Traffic
- Public Awareness



BRENT SPENCE BRIDGE

REPAIR OVERVIEW

AERIAL: NOV. 16, 2020



CONSTRUCTION



**HEAT AFFECTED
ZONE**



CONSTRUCTION



UPPER/ SOUTHBOUND DECK



CONSTRUCTION



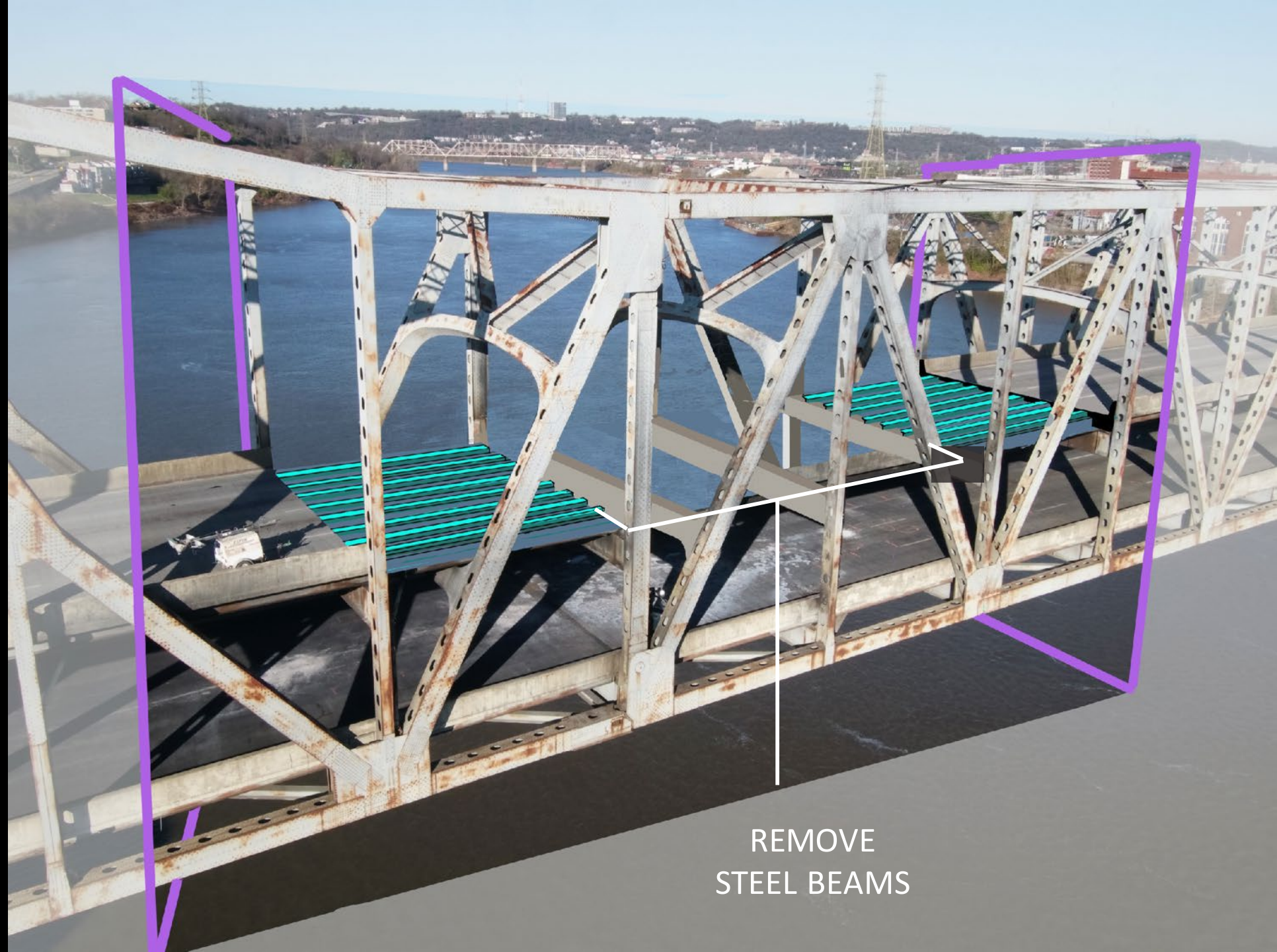
REMOVE CONCRETE
DECK

REMOVE CONCRETE BARRIERS

**UPPER/
SOUTHBOUND
DECK**



CONSTRUCTION

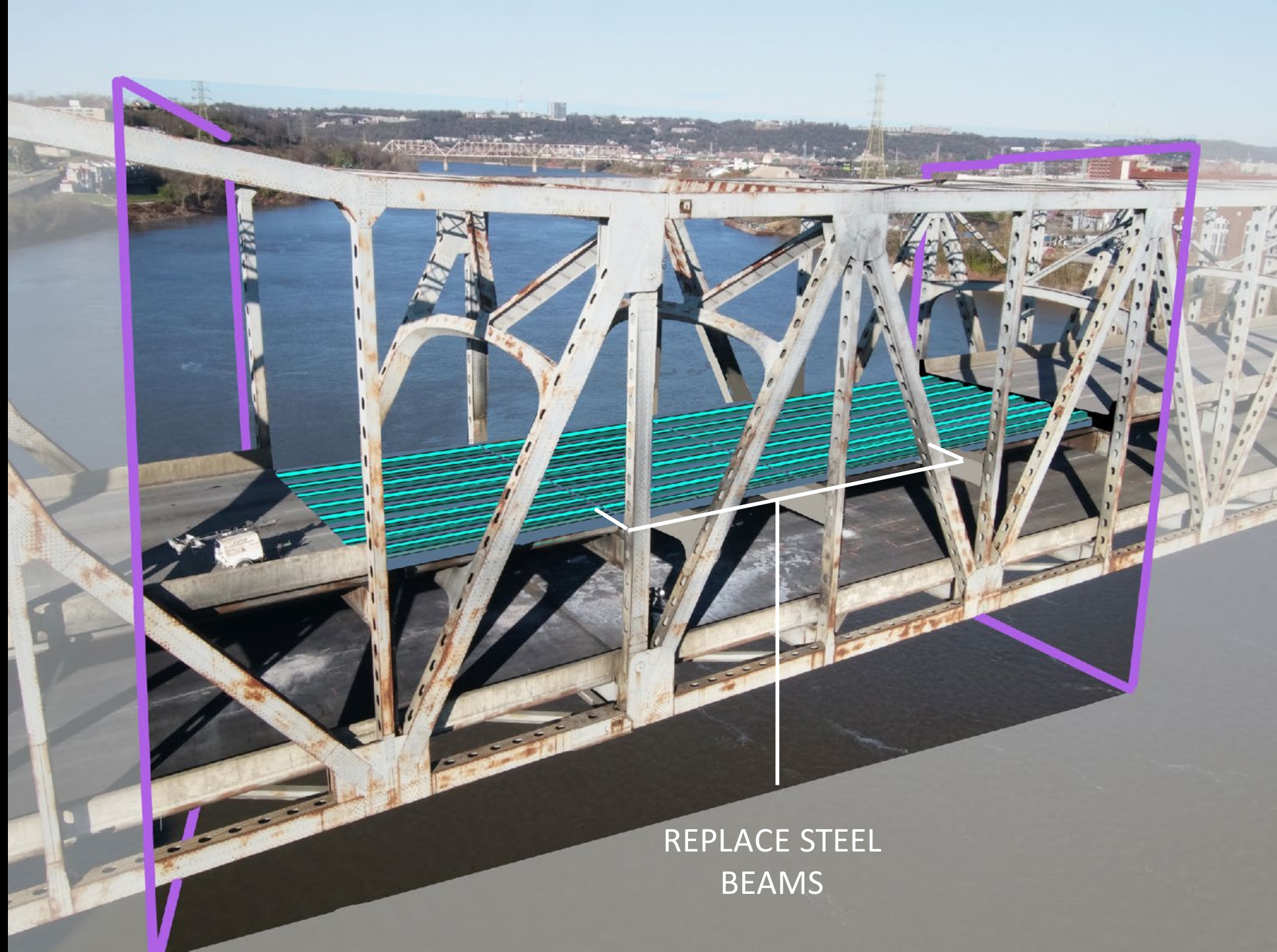


**REMOVE
STEEL BEAMS**

**UPPER/
SOUTHBOUND
DECK**



CONSTRUCTION

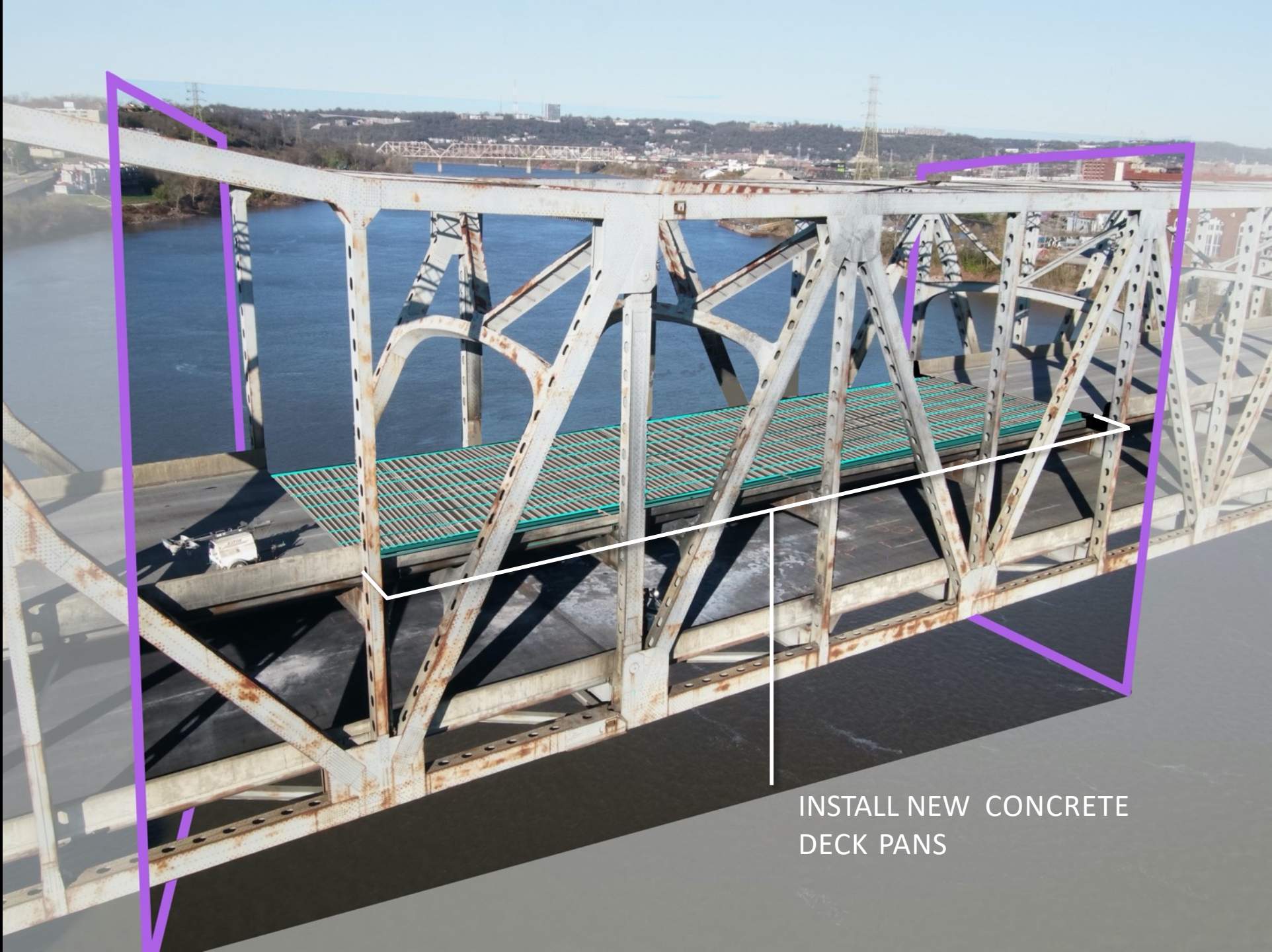


**REPLACE STEEL
BEAMS**

**UPPER/
SOUTHBOUND
DECK**



CONSTRUCTION

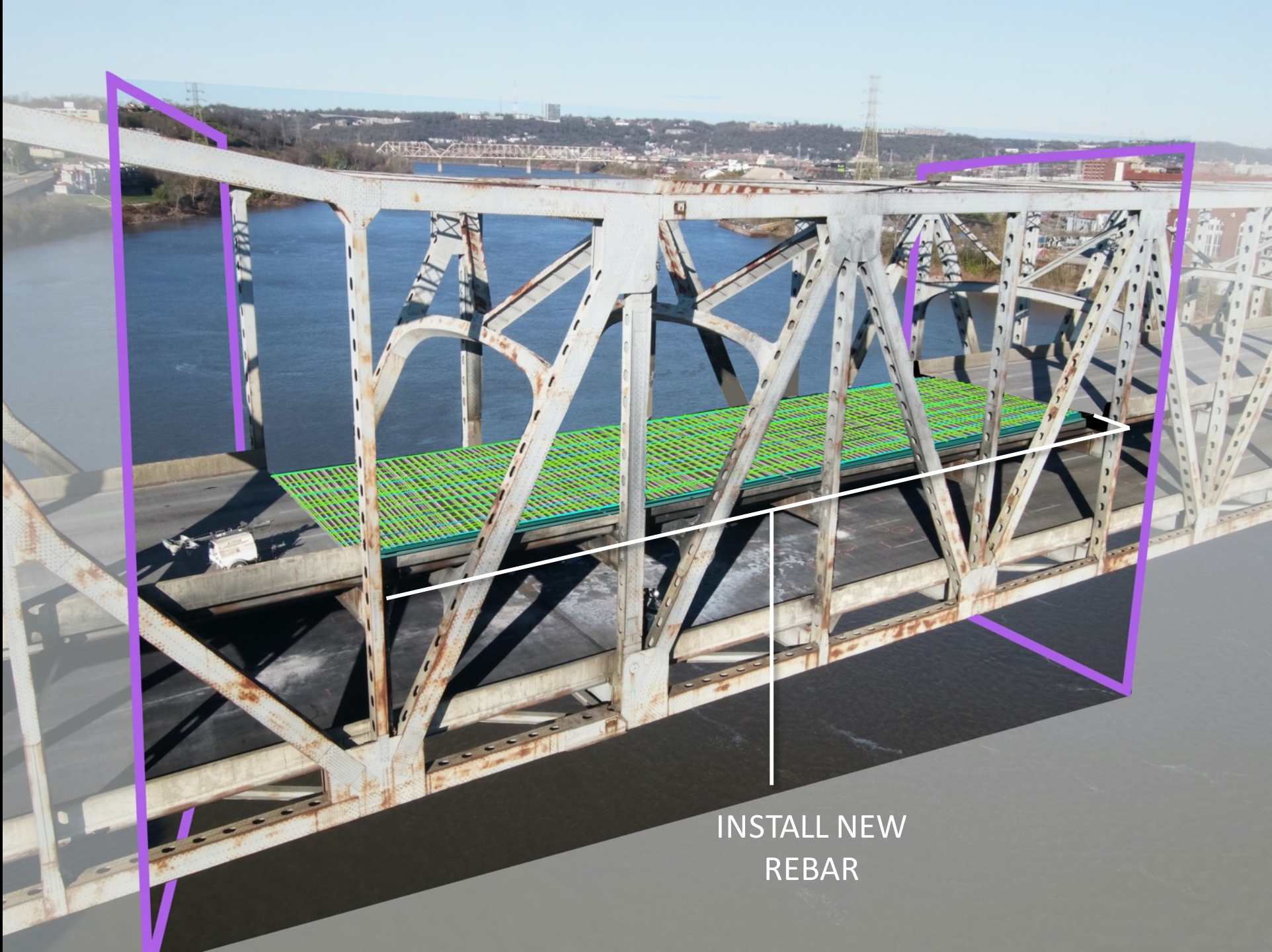


**INSTALL NEW CONCRETE
DECK PANS**

**UPPER/
SOUTHBOUND
DECK**



CONSTRUCTION

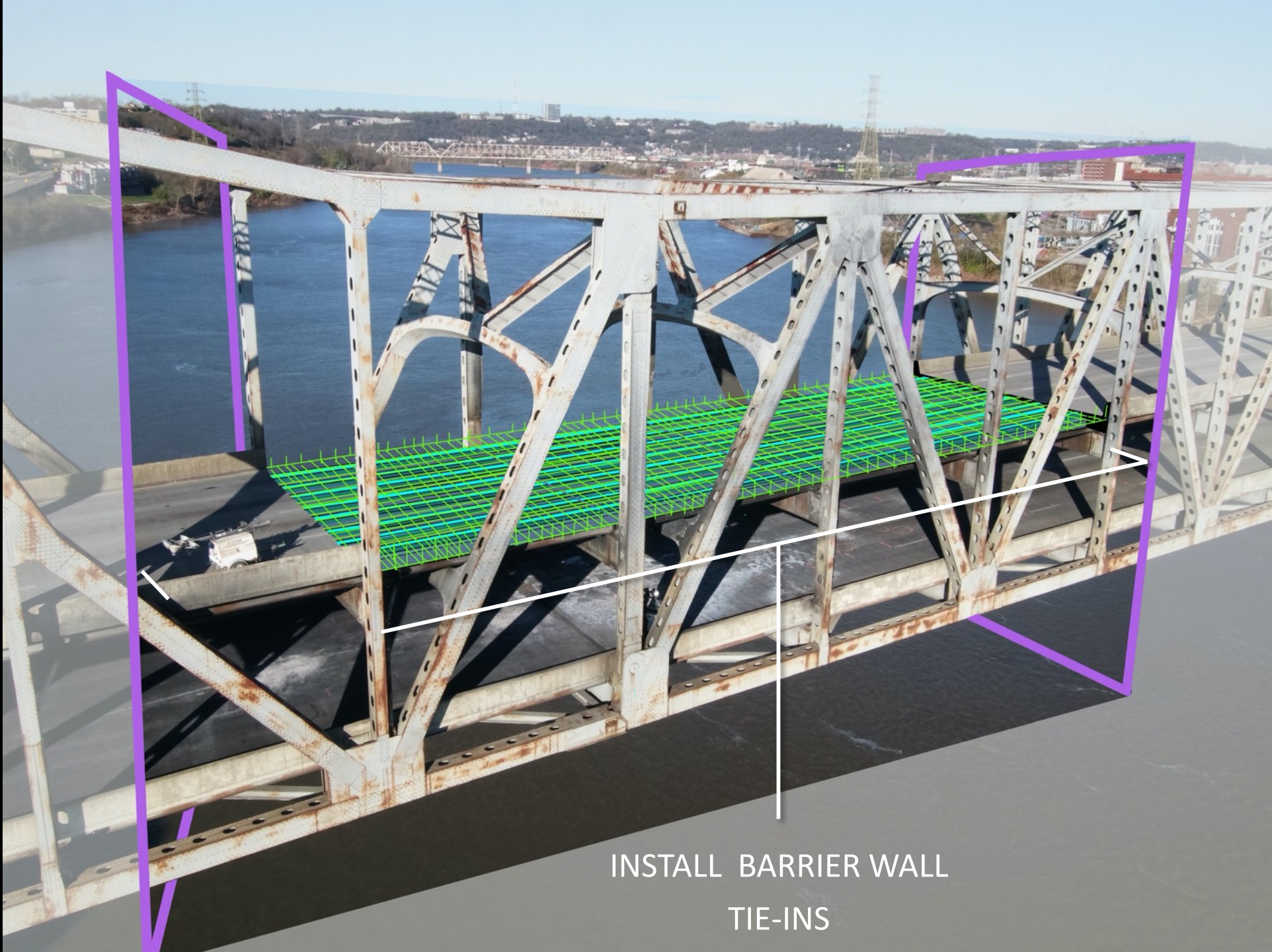


**INSTALL NEW
REBAR**

**UPPER/
SOUTHBOUND
DECK**



CONSTRUCTION

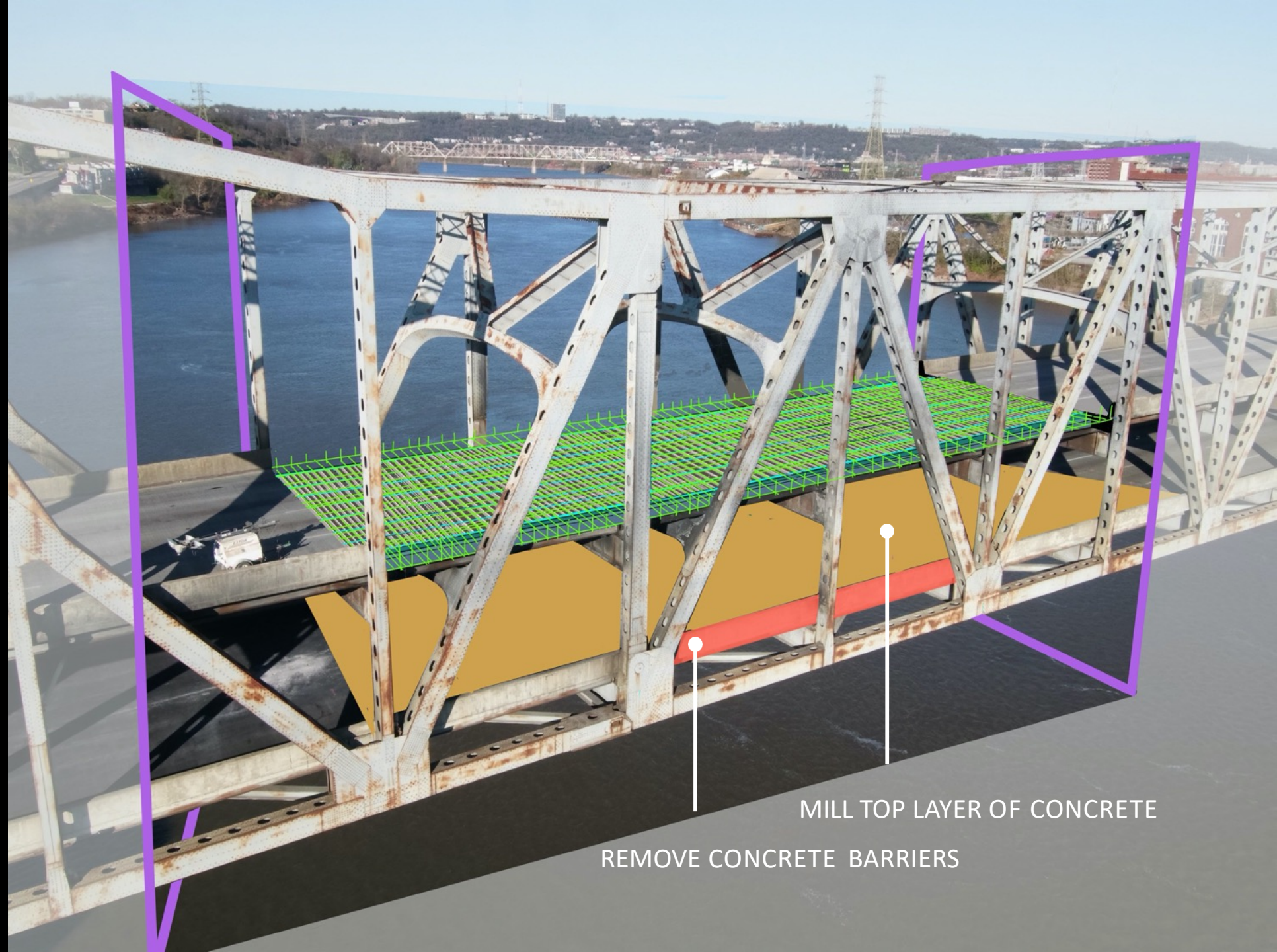


**INSTALL BARRIER WALL
TIE-INS**

LOWER/ NORTHBOUND DECK



CONSTRUCTION

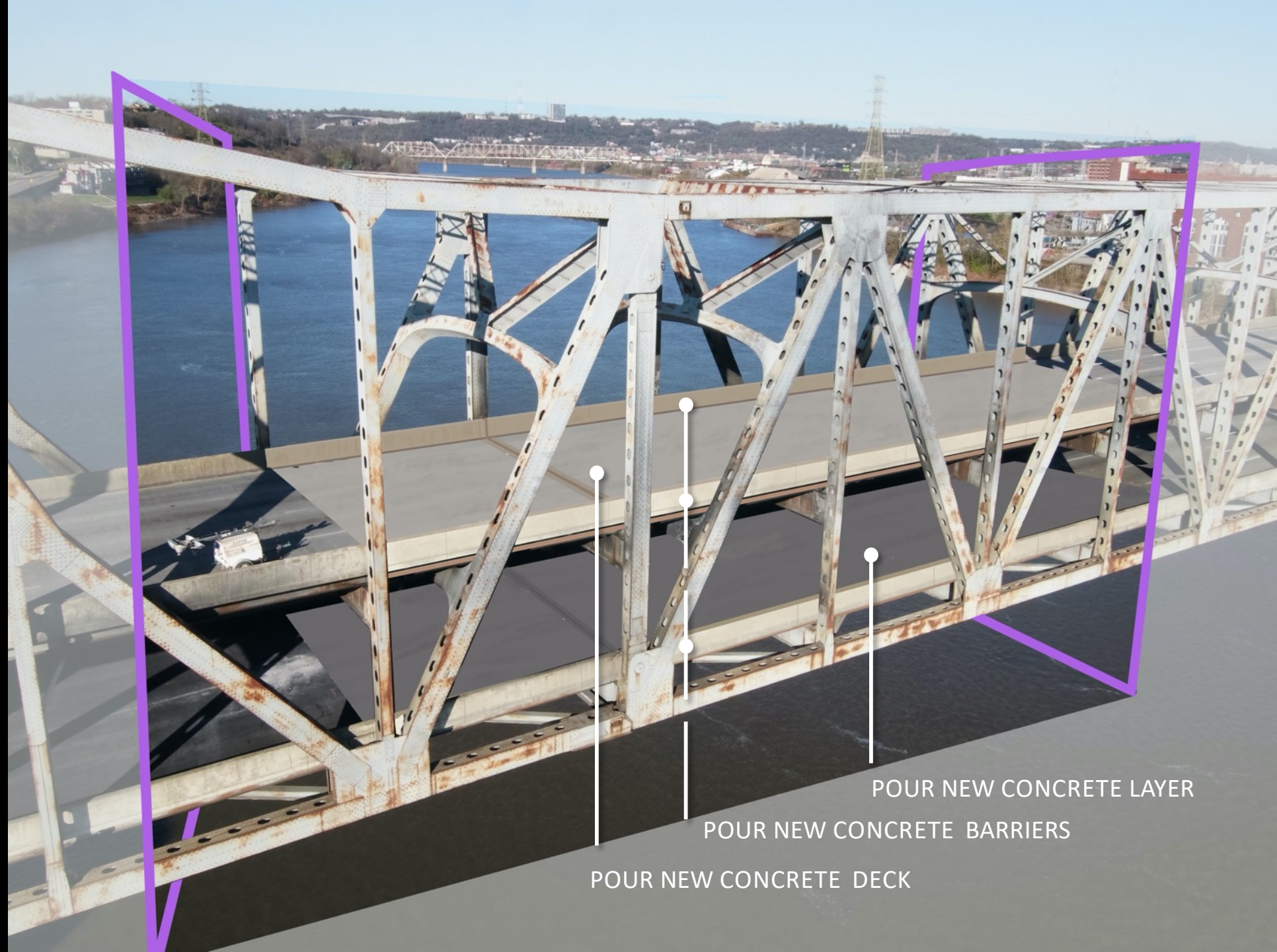


MILL TOP LAYER OF CONCRETE
REMOVE CONCRETE BARRIERS

UPPER AND LOWER DECKS



CONSTRUCTION



- POUR NEW CONCRETE DECK
- POUR NEW CONCRETE BARRIERS
- POUR NEW CONCRETE LAYER

UPPER AND LOWER DECKS

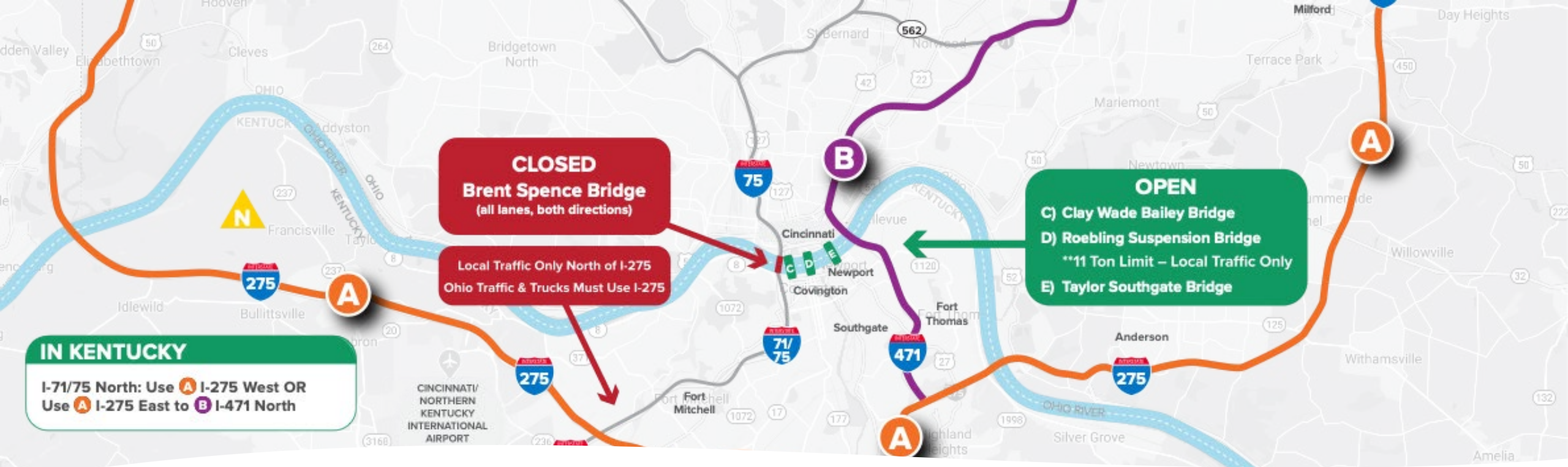


CONSTRUCTION



COMPLETE FINAL INSPECTIONS

RESTRIPE NEW CONCRETE



MAINTENANCE OF TRAFFIC

- **Regional Approach**
- **Constant communication and coordination** with ODOT, local officials throughout the region
- **Adjustments made in real time** based on feedback from emergency personnel and partners

EFFICIENCY PROJECTS

- Completed planned future projects during bridge closure
 - Drainage work at northbound approach
 - Resurfacing
 - Other maintenance projects and miscellaneous repairs



PUBLIC AWARENESS: Feed The Beast

- Dedicated website
- Weekly virtual press conferences and news releases
- Daily social media updates
- Emphasize the people doing the work, not just the nuts and bolts



BrentSpenceRepair.com



**STAY UPDATED ON BRIDGE
REPAIRS AND THE LATEST
TRAFFIC INFORMATION**



OPENING DAY! DEC. 22 – ONE DAY EARLY



COMPLETION

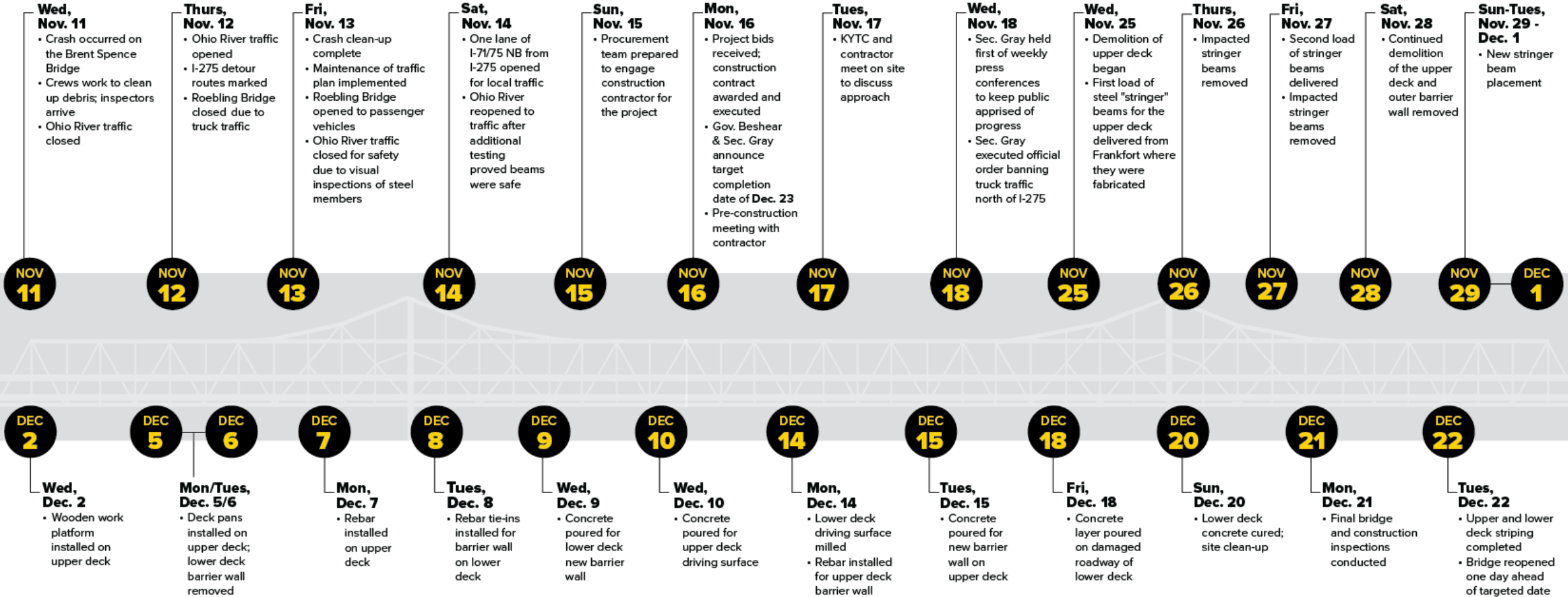
CONCLUSION

- Ahead of schedule
- Under budget
- Overwhelmingly positive public feedback



Brent Spence Bridge Timeline

On Wed, Nov. 11 at approximately 2:45 a.m., two commercial vehicles collided on the lower deck of the Brent Spence Bridge. While the resulting fire did not compromise the structural integrity of the bridge, both decks of the bridge were closed for inspection and repair. In less than six weeks, the Kentucky Transportation Cabinet worked with deliberate speed to move from **Crash** to **Contract** to **Construction** to **Completion**.





CRASH



CONTRACT



CONSTRUCTION



COMPLETION

Thank You!
QUESTIONS?